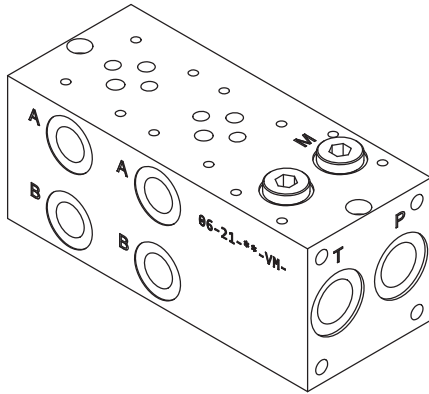
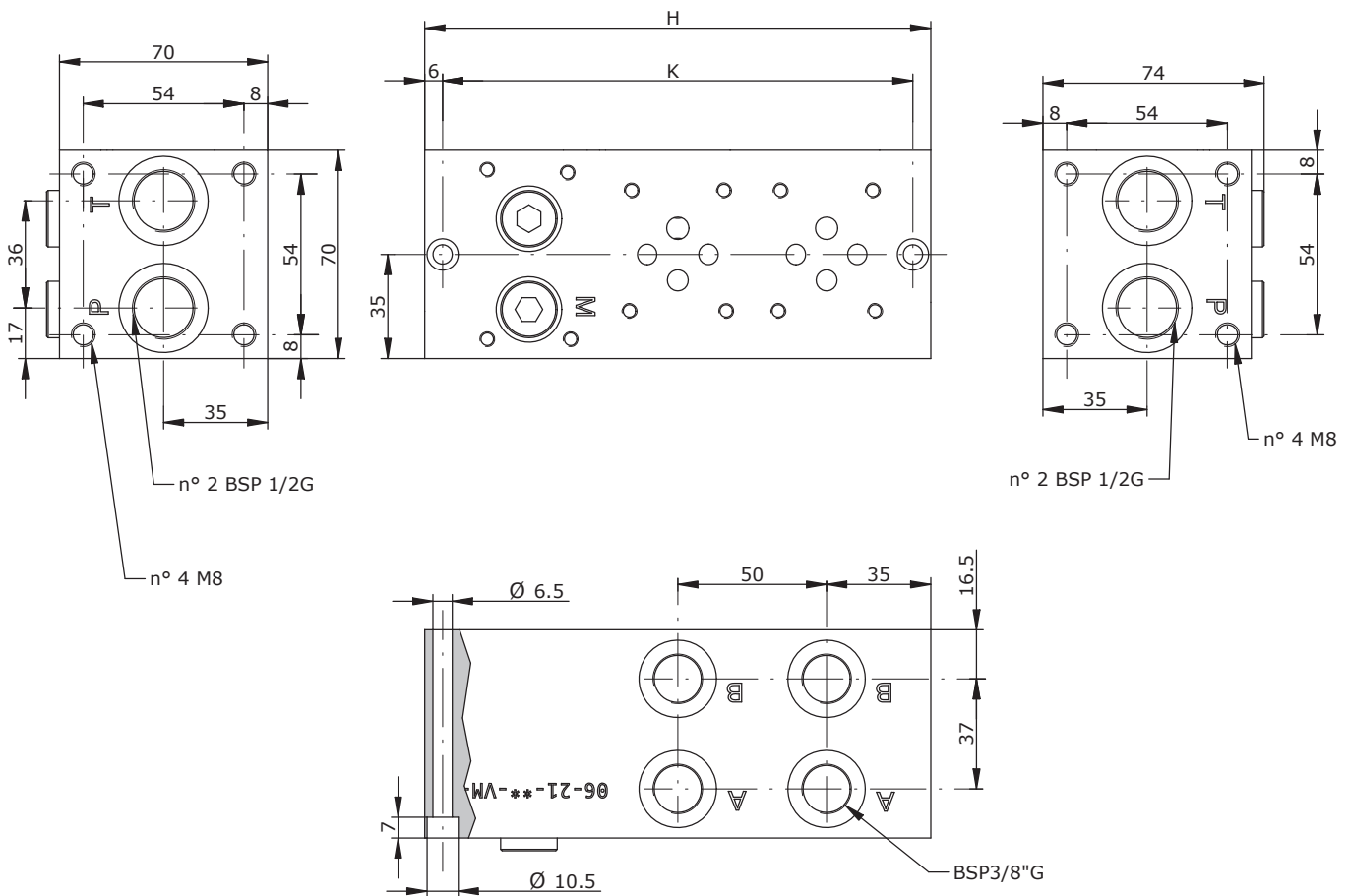
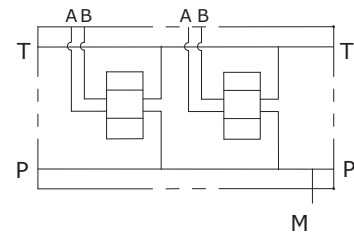


SORTÖMB - Cetop 3

A,B oldalt - P,T átmenő



Hidraulikus ábra



E_06 - 21 - 38 - __ - 0

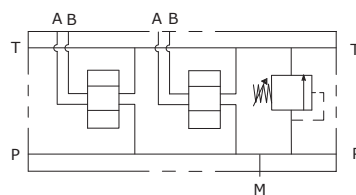
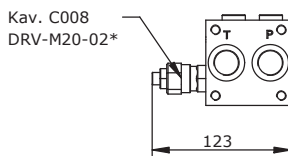
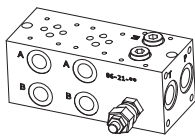
POS.	01	02	03	04	05	06	07	08	09	10
H	120	170	220	270	320	370	420	470	520	570
K	108	158	208	258	308	358	408	458	508	558



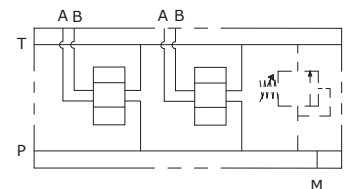
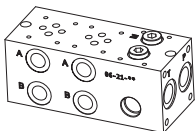
SORTÖMB - Cetop 3

A,B oldalt - P,T átmenő

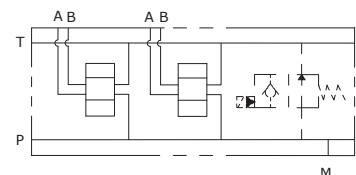
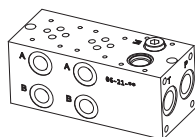
E_06 - 21 - 38 - ___ - 1



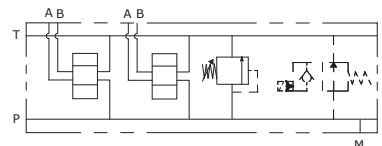
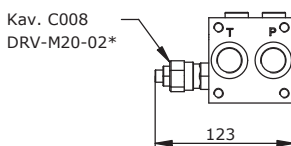
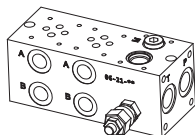
E_06 - 21 - 38 - ___ - 2



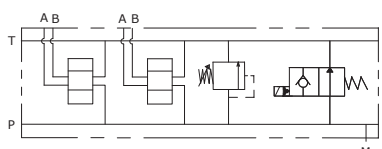
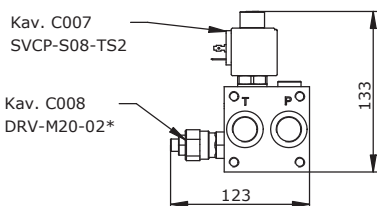
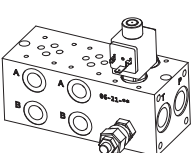
E_06 - 21 - 38 - ___ - 3



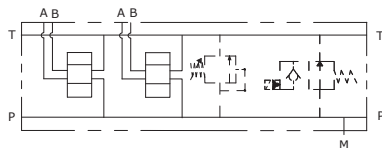
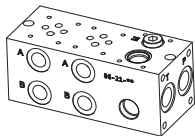
E_06 - 21 - 38 - ___ - 4



E_06 - 21 - 38 - ___ - 5



E_06 - 21 - 38 - ___ - 6



E_06 - 21 - 38 - ___ - ___ - ___ - ___ - ___ - ___ - ___ - ___

S = Acél Tagok száma: 01 - 10
A = Alumínium

- 0 = Nyom.hat. nélkül
- 1 = Nyomáshatárolóval
- 2 = Nyom.hat. kész
- 3 = Szelepezéssel
- 4 = Nyom.hat. + szelepezés kész
- 5 = Nyom.hat. + szelepezés
- 6 = Nyom.hat. kész + szelepezés kész

- 0 = Nyom.hat. nélkül
- 1 = 5-50 bar
- 2 = 20-110 bar
- 3 = 50-220 bar
- 4 = 100-350 bar
- 5 = 100-420 bar

0 = Nyom.hat. nélkül
H = Kulccsal állítható K = Tekerógombos C = Védősapkás I = Nem állítható



Tömítés:

N = NBR
V = Viton

Szelepezés

000 = Nincs
TS2 = Ah. nyitott (NO)

Szelep kézi működtetés

0 = Kézi segédműködtetés nélkül
3 = Nyomótű
4 = Nyomógomb
5 = Hatszög

Elektr. csatlakozó

0 = Mágnes nélkül
C = Cavi / Leads
D = DIN 43650
5 = Deutsch DT04-2P
A = AMP Junior

Feszültség

000 = Mágnes nélkül
D12 = 12 VDC
D24 = 24 VDC
220 = 220 RAC

